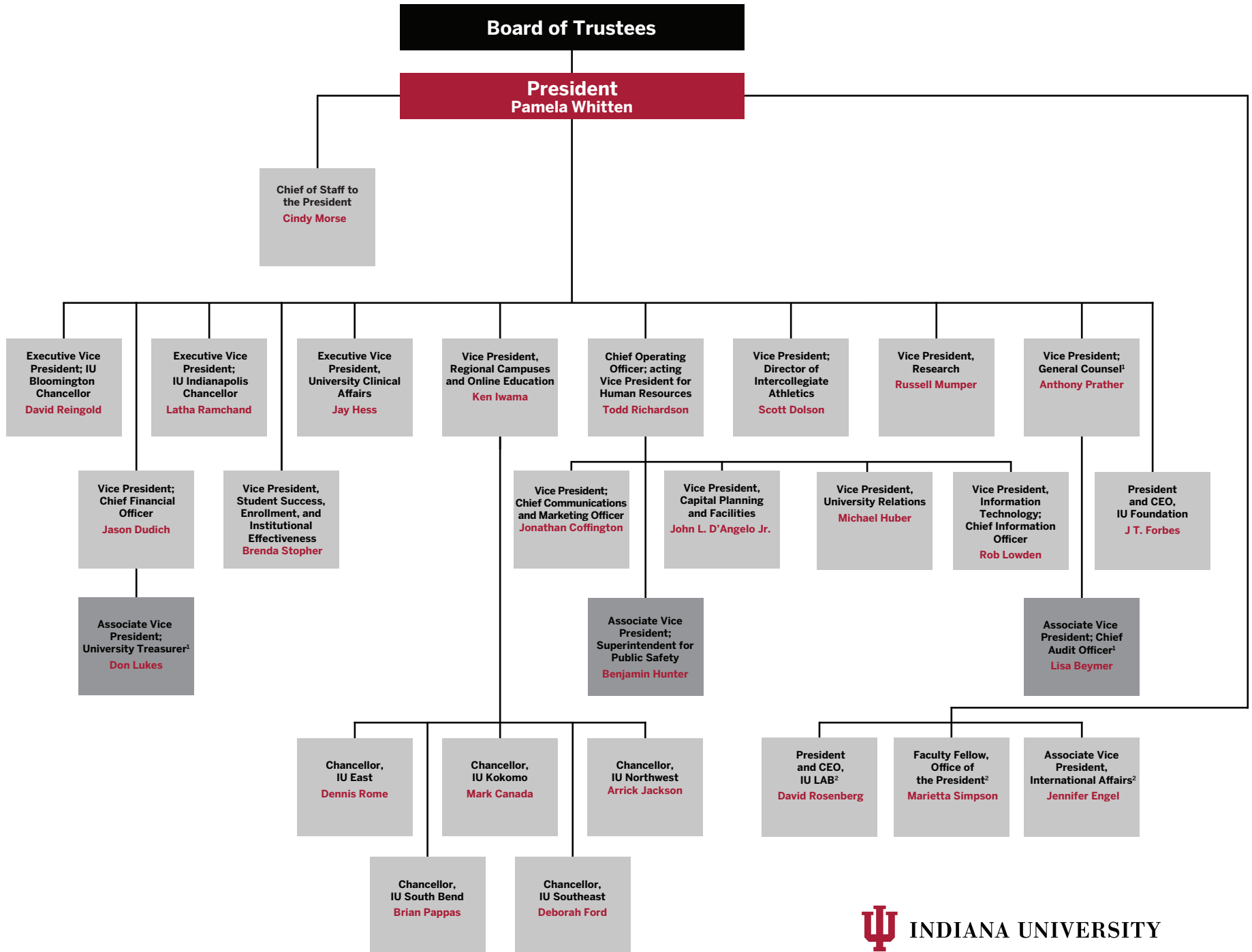


Indiana University

President's Cabinet



Indiana University

Board of Trustees

- **President Pamela Whitten**
 - **Chief of Staff to the President Cindy Morse**
 - **Chief Operating Officer; acting Vice President for Human Resources Todd Richardson**
 - **Vice President; Chief Communications and Marketing Officer Jonathan Coffington**
 - **Vice President, Capital Planning and Facilities John L. D'Angelo Jr.**
 - **Vice President, University Relations Michael Huber**
 - **Vice President, Information Technology; Chief Information Officer Rob Lowden**
 - **Associate Vice President; Superintendent for Public Safety Benjamin Hunter**
 - **Executive Vice President; IU Bloomington Chancellor David Reingold**
 - **Executive Vice President; IU Indianapolis Chancellor Latha Ramchand**
 - **Executive Vice President, University Clinical Affairs Jay Hess**
 - **Vice President, Regional Campuses and Online Education Ken Iwama**
 - **Regional Campus Chancellors**
 - ◻ **IU East Dennis Rome**
 - ◻ **IU Kokomo Mark Canada**
 - ◻ **IU Northwest Arrick Jackson**
 - ◻ **IU South Bend Brian Pappas**
 - ◻ **IU Southeast Deborah Ford**
 - **Vice President; Director of Intercollegiate Athletics Scott Dolson**
 - **Vice President; Chief Financial Officer Jason Dudich**
 - **Associate Vice President; University Treasurer¹ Don Lukes**
 - **Vice President, Research Russell Mumper**
 - **Vice President; General Counsel¹ Anthony Prather**
 - **Associate Vice President; Chief Audit Officer¹ Lisa Beymer**
 - **Vice President, Student Success, Enrollment, and Institutional Effectiveness Brenda Stopher**
 - **President and CEO, IU Foundation J T. Forbes**
 - **President and CEO, IU LAB² David Rosenberg**
 - **Faculty Fellow, Office of the President² Marietta Simpson**
 - **Associate Vice President, International Affairs² Jennifer Engel**

The President's Cabinet comprises the chief operating officer, executive vice presidents, vice presidents, and the president and CEO of the IU Foundation.

¹ Also reports to the Board of Trustees

² Reports directly to the President